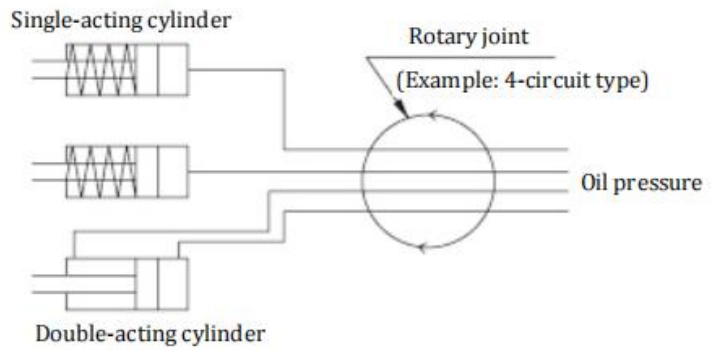


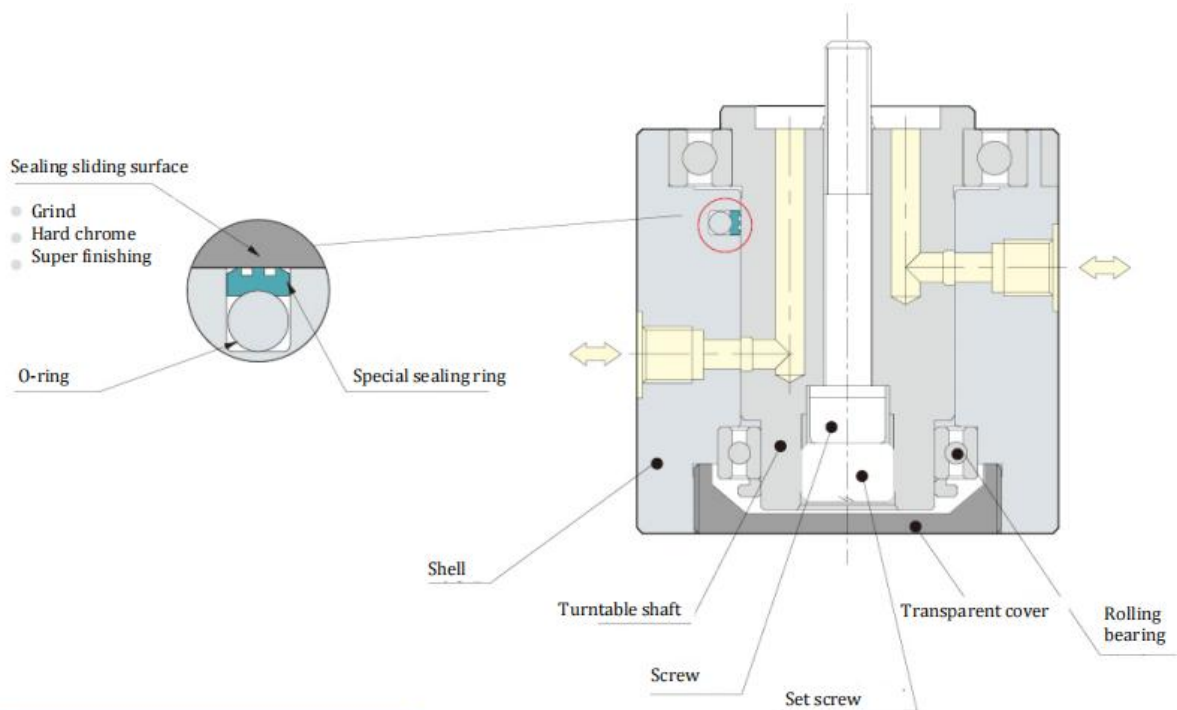
YRA oil circuit rotary joint



- The oil pressure rotary joint effectively solves the problem that the oil pressure hose and fixed piping are difficult to supply oil to the rotary table of the machining center.
For example: when the 4-circuit type is selected, it can be used to control a single-acting cylinder or 2 double-acting cylinders respectively.

• **Low starting torque**
A special seal with low resistance is adopted to minimize sliding resistance and realize low torque at start-up.

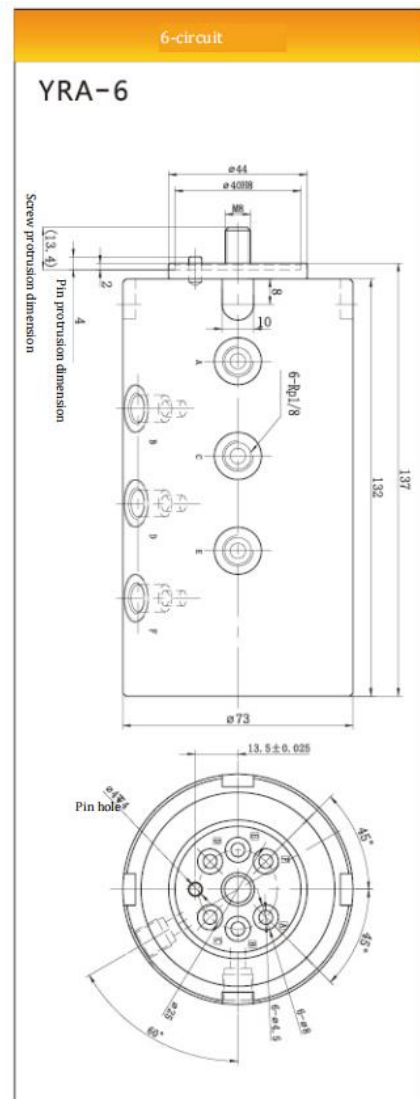
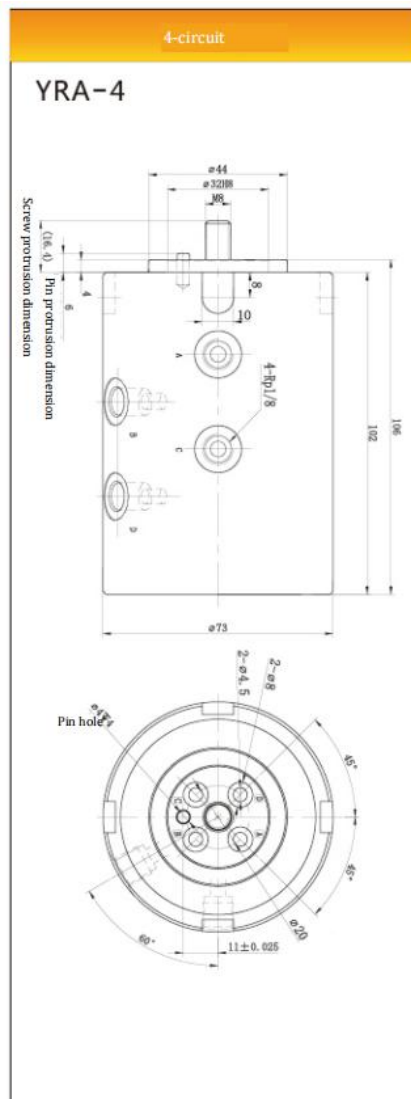
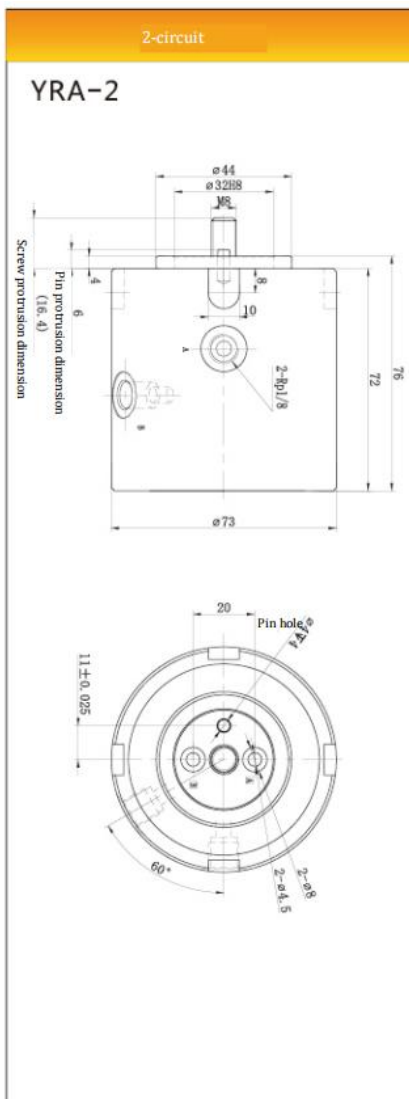
• **It can be shared with oil and gas**
Because the special seal has excellent sealing performance, it can be used in both oil pressure circuit and air pressure circuit.



• **Excellent sealing and durability**
After the sealing sliding surface is ground and hard chrome-plated, it is super-finished for excellent sealing performance and durability.

Specifications

| Model | YRA-2 | YRA-4 | YRA-6 |
|----------------------------------------|------------------------------------------------------------------------------------------------------------|-----------|-----------|
| Number of circuits | 2-circuit | 4-circuit | 6-circuit |
| Operating fluid | Ordinary mineral oil-based hydraulic oil (equivalent to ISO-VG32) or air | | |
| Maximum operating pressure (MPa) | 25 | | |
| Allowed RMPs | Varies with the fluid pressure | | |
| Operating environment temperature (°C) | 0~70 | | |
| Piping interface dimension | The thread of the upper hole of the main body is Rp1/8 | | |
| Mass (kg) | 2.1 | 3.0 | 3.89 |
| Oil hole O-ring | Note: all YRA oil circuit distributors in this series are equipped with O-ring with the model of AS568-802 | | |



Use occasion and precautions of rotary joint

1. Three types from 2-circuit to 6-circuit are available, and each circuit can be used independently. Supply oil to the rotary table of the machining center through the oil pressure hose or fixed piping.
2. When air pressure and hydraulic pressure are mixed, oil and air leakage may occur due to the internal pressure difference. Please pay attention to the pressure difference
3. During installation, the seal shall not fall off on the counterbore on the end face of the rotating shaft. During installation, the vertical angle between the oil circuit rotary joint and the oil circuit connecting rod must be ensured. Otherwise, oil leakage and poor operation may be caused.